

# Winter Fuel Payment

Recent changes to the Winter Fuel Payment system affect some of the information in this guide. Up to date information is below – the rest remains the same.

Winter Fuel Payment is an annual payment for households that include someone born on or before 21 September 1959 (for 2025-26).

Eligibility is now based on you being over State Pension age – you no longer need to be claiming Pension Credit or another means-tested benefit to qualify.

If your taxable income is over £35,000 per year, HMRC will take back your Winter Fuel Payment through the tax system.

Contact the Winter Fuel Payment Centre on **0800 731 0160** or visit **[www.gov.uk/winter-fuel-payment](http://www.gov.uk/winter-fuel-payment)** if you have questions about your payment, or if you'd like to opt out of receiving it.

For more help, give our Advice Line a ring for free on **0800 169 65 65** (8am-7pm, 365 days a year).



Extra money if you're  
on a low income



## What is Pension Credit?

**Pension Credit is a means-tested benefit for older people. This means that what you get depends on your income and your savings.**

There are 2 parts to Pension Credit:

- **Guarantee Credit** – this tops up your weekly income to a guaranteed minimum level.
- **Savings Credit** – this is a bit of extra money if you have some savings or your income is higher than the basic State Pension.

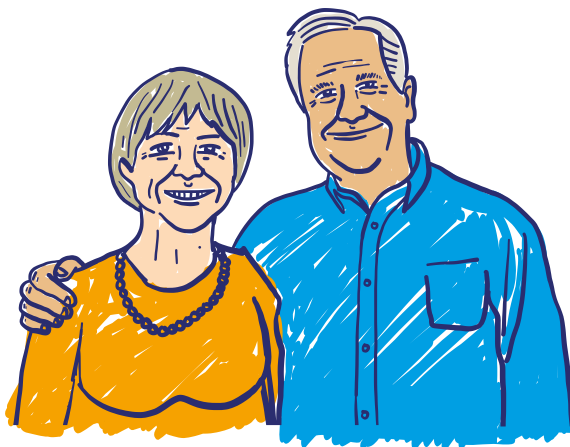
You may be eligible for one or both parts.

## How much is it worth?

Depending on your eligibility, you can claim one or both parts of Pension Credit. The amounts depend on whether you're single or a couple.

<b>Guarantee Credit</b>	<b>Single</b>	<b>Couple</b>
Weekly top-up to:	<b>£227.10</b>	<b>£346.60</b>
<b>Savings Credit</b>		
Weekly extra of:	<b>£17.30</b>	<b>£19.36</b>

Don't be put off if you find out you're only eligible for a small amount of Pension Credit. By claiming it, you may become eligible for other benefits, such as Housing Benefit, Council Tax Reduction or the Winter Fuel Payment.



**“Claiming Pension Credit means my other half and I have that bit extra. It’s really helped.”**

Steve, 68

# Which part can I claim?

## You may be eligible for Guarantee Credit if:

- you've reached State Pension age – this is currently 66 years old for both men and women
- your weekly income is less than £227.10 if you're single, or less than £346.60 if you're a couple.

## You may be eligible for Savings Credit if:

- you reached State Pension age before 6 April 2016
- you're a couple and both of you reached State Pension age before 6 April 2016.

There isn't a savings limit for Pension Credit – but if you have more than £10,000 in savings, this affects the amount you receive.

If you have a disability, you care for someone, you have dependent children or you have certain housing costs, you might be eligible for Pension Credit even if your income is higher than the amounts above.

## Good to know



If you're a mixed-age couple (meaning only one of you is over State Pension age), you normally have to claim Universal Credit until you both reach State Pension age, when you can claim Pension Credit. See our guide **Universal Credit** for more information.

# Why should I claim Pension Credit?

**You have nothing to lose by applying – and potentially a lot to gain.**

Pension Credit doesn't just top up your income. It's also your passport to other benefits.

- You get free NHS dental treatment. You can also claim help with the cost of glasses and transport to the hospital.
- You're eligible for the Winter Fuel Payment.
- You get a Cold Weather Payment of £25 when the average temperature in your area is 0°C or below for 7 days in a row between 1 November and 31 March.
- If you pay rent, you might get Housing Benefit to help.
- If you own your home, you might be eligible for help with housing costs like service charges, or a loan to help with mortgage interest payments.
- If you care for someone, you might get an extra amount known as a carer addition. This can be up to £46.40 a week.
- If you have a disability, you might get an extra amount known as a severe disability addition. This can be up to £82.90 a week.
- If you're responsible for a child, you may receive an extra amount included for them.

**“I made a claim for Pension Credit and got money off my new glasses.”**

Debbie, 78



## How do I claim?

Call the Pension Credit claim line on **0800 99 1234**. You'll need to have the following to hand:

- your National Insurance number
- your bank account details
- information about your income, savings and investments
- information about any private or occupational pensions you have
- details of any housing costs (such as service charges or ground rent)
- your partner's details, if you have a partner.

If you need help making a claim, contact your local Age UK. In Wales, contact your local Age Cymru. You can find your local Age UK or Age Cymru using the contact details on the next page.



# Useful organisations

## Age UK

We provide information and advice for people in later life through our Age UK Advice Line, publications and website.

**Age UK Advice: 0800 169 65 65**

Lines are open seven days a week from 8am to 7pm.

**[www.ageuk.org.uk](http://www.ageuk.org.uk)**

In Wales, contact Age Cymru Advice: **0300 303 44 98**

**[www.agecymru.org.uk](http://www.agecymru.org.uk)**

In Northern Ireland, contact Age NI: **0808 808 7575**

**[www.ageni.org](http://www.ageni.org)**

In Scotland, contact Age Scotland: **0800 124 4222**

**[www.agescotland.org.uk](http://www.agescotland.org.uk)**

## Pension Credit claim line

Call to apply for Pension Credit.

Tel: **0800 99 1234**

**[www.gov.uk/pension-credit](http://www.gov.uk/pension-credit)**

This information guide has been prepared by Age UK and contains general advice only, it should not be relied on as a basis for any decision or action. Neither Age UK nor any of its subsidiary companies or charities accepts responsibility to ensure any information is up to date and accurate. Please note that the inclusion of named agencies, websites, companies, products, services or publications in this information guide does not constitute a recommendation or endorsement by Age UK or any of its subsidiary companies or charities.

# What should I do now?

You may want to read some of our relevant information guides and factsheets, such as:

- **More money in your pocket**
- **State Pension**

You can order any of our guides or factsheets by giving our Advice Line a ring for free on **0800 169 65 65** (8am-7pm, 365 days a year).

Our friendly advisers are there to help answer any questions.

All of our publications are available in large print and audio formats.

There's plenty of really useful information on our website, too. Visit **[www.ageuk.org.uk/moneymatters](http://www.ageuk.org.uk/moneymatters)** to get started.

If contact details for your local Age UK are not in the below box, call Age UK Advice free on **0800 169 65 65**.



**0800 169 65 65**  
**[www.ageuk.org.uk](http://www.ageuk.org.uk)**



Age UK is a charitable company limited by guarantee and registered in England and Wales (registered charity number 1128267 and registered company number 6825798). Registered address: Age UK, 7th Floor, One America Square, 17 Crosswall, London EC3N 2LB. Age UK and its subsidiary companies and charities form the Age UK Group. ID205681 04/25